

Technical sheet :

260 TJ+

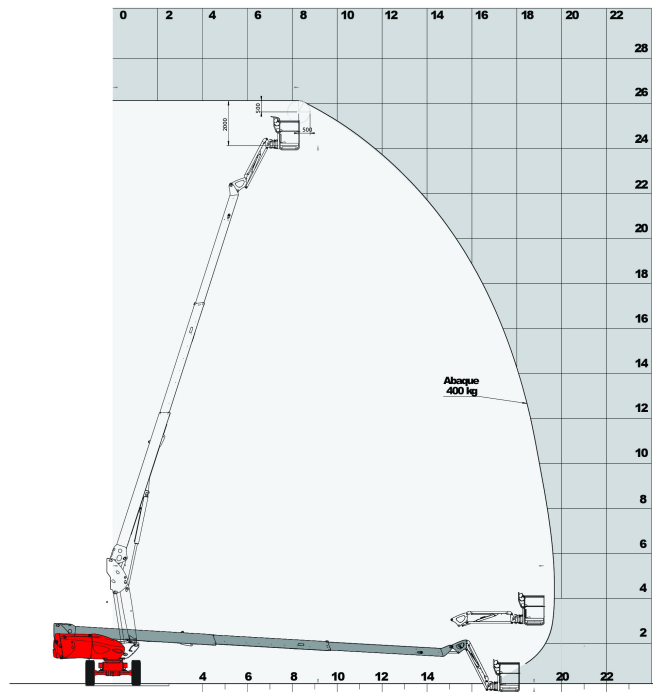


Capacities		Metric
Working height	h21	25.89 m
Platform height	h7	23.89 m
Max. outreach	r1	19.7 m
Pendular arm rotation (bottom)		±63 °
Platform capacity	Q	400 kg
Turret rotation		360 °
Platform rotation (right / left)		90 ° / 90 °
Number of people (inside / outside)		3 / 3
Weight and dimensions		
Platform weight*		16380 kg
Platform dimensions (length x width)	lp / ep	2.3 m x 0.9 m
Overall width	b1	2.48 m
Overall length	l1	10.84 m
Overall height	h17	2.8 m
Overall length (stowed)	l9	7.88 m
Overall height (stowed)	h18	2.8 m
Floor height (access)	h20	0.48 m
Counterweight offset (turret at 90°)	a7	1.42 m
Internal turning radius (over tyres)	b13	1.75 m
External turning radius	Wa3	6.845 m
Ground clearance	m4	0.41 m
Ground clearance at centre of wheelbase	m2	0.41 m
Wheelbase	y	2.71 m
Performances		
Drive speed - stowed		4.5 km/h
Drive speed - raised		0.8 km/h
Gradeability		35 %
Permissible leveling		4 °
Wheels		
Tyres type		Solid Tyres Cured-On
Drive wheels (front / rear)		2 / 2
Steering wheels (front / rear)		2 / 2
Braking wheels (front / rear)		2 / 2
Engine/Battery		
Engine brand / model		Kubota - V2403-M
Engine norm		Stage III A
I.C. Engine power rating / Power (kW)		45 Hp / 34.1 kW
Miscellaneous		
Ground Pressure		21.3 daN/cm²
Hydraulic Pressure		250 Bar
Hydraulic tank capacity		94 l
Fuel tank		72 l
Vibration on hands/arms		< 0.5 m/s
Daily consumption **		10.50 l
Standards compliance		
This machine is in compliance with:		European directives: 2006/42/EC- Machinery (revised EN280:2013) - 2004/108/EC (EMC) - 2006/95/EC (Low voltage)

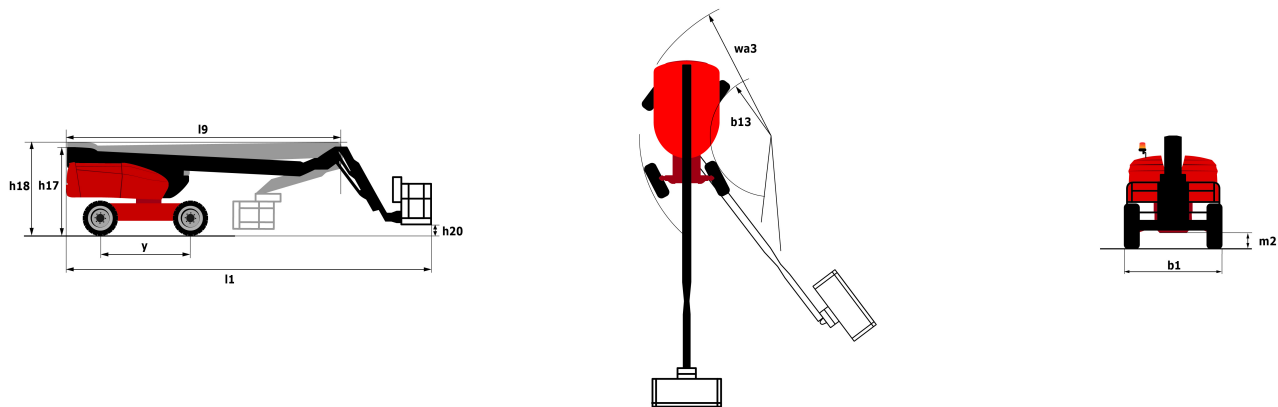
** According to "REDUCE cycle"

Load chart

Load Chart for AWP Metric



Dimensional drawing



Equipment

Standard

- 230V Predisposition
- 4 simultaneous movements
- 4 wheel drive
- 4 wheel steer with crab mode
- Audible alarm and illuminated indicator lamp (leveling, overload, lowering)
- Backup electrical pump
- Continuous turret rotation
- Differential locking on rear axle
- Easy Manager
- Electronic platform compensation
- Emergency stop button in platform and on frame
- Engine mounted on sliding platform
- Fuel gauge with low level indicator
- Hour meter
- Integrated diagnostic assistance
- Large basket with three entries
- Operator presence pedal
- Oscillating front axle
- Rear axle with limited slip differential
- Remote control for transport

Optional

- 110 or 230V plug with differential circuit breaker
- Access control keypad for easy link
- Additional storage boxes
- Air predisposition
- Basket 1,800 mm
- Battery charger
- Battery cut-off
- Beep on every movement
- Beep upon travel
- Biodegradable oil
- Catalytic cleaner
- Extreme cold oil
- Key lock on fuel tank
- Onboard generator (3,5 or 5 kW)
- Panel support kit

Optional

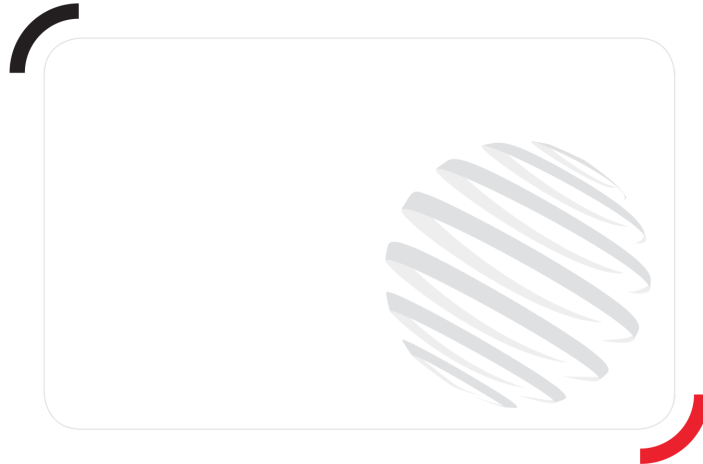
SMS : Safe Man System

Safety harness

Spark arrester

Tube support kit

Working light



Siège Social
430 rue de l'Aubinière - 44150 Ancenis Cedex - France
Tel: +33(0)2 40 09 10 11 - Fax: +33 (0)2 40 09 10 97
www.manitou.com



This brochure describes versions and configuration options for Manitou products which may be fitted with different equipment. The equipment described in this brochure may be standard, optional or not available depending on version. Manitou reserves the right to change the specifications shown and described at any time and without prior warning. The manufacturer is not liable for the specifications given. For more information, contact your Manitou dealer. Non-contractual document. Product descriptions may differ from actual products. List of specifications is not comprehensive. The logos and visual identity of the company are the property of Manitou and may not be used without authorisation. All rights reserved. The photos and diagrams contained in this brochure are provided for information only.

MANITOU BF SA - Limited company with board of directors - Share capital: 39,668,399 euros - 857 802 508
RCS Nantes